

I start off here:

WebGUI - Admin Console - Mozilla

File Edit View Go Bookmarks Tools Window Help

Back Forward Reload Stop <http://web4.control.com/root/import/sqlreport?func=manageAssets> Search Print

Home Bookmarks WWW Unit Converter Local Weather Forec... How to Write Press ... Control Links ChannelWave Google Debug References

Disable CSS Forms Images Information Miscellaneous Outline Resize Tools View Source Options

[#CORPWEB-1051] New pms... Control@ - Lodging Link PTS WebGUI - Admin Console Plain Black, makers of WebG... Plain Black, makers of WebG...

ASSETS

Root > Import Node > SQLReport

Manage | Search

<input type="checkbox"/>	Rank		Title	Type	Last Updated	Size	Locked
<input type="checkbox"/>	1	Edit More	Default SQL Report	Template	11/21/2006 4:34 am	4 kB	<input type="checkbox"/>
<input type="checkbox"/>	2	Edit More	Asset Report	Template	11/20/2006 11:00 am	791 B	<input type="checkbox"/>
<input type="checkbox"/>	3	Edit More	Asset Report (copy)	Template	12/ 5/2006 7:20 pm	799 B	<input type="checkbox"/>
<input type="checkbox"/>	4	Edit More	Asset Report (copy) (copy)	Template	12/ 7/2006 2:55 pm	803 B	<input checked="" type="checkbox"/>

Delete Cut Copy Duplicate

New Content

- Dashboard
- Folder
- Page Layout
- Article
- Collaboration System
- Data Form
- Event Management System

Clipboard

- Select All
- Style3 Coolmenu (copy)
- PMS Developer Kit (copy)
- Cazarin Style 2 Column

Paste

Packages

- Specification Page Template [Edit](#) [Export](#)
- Family Page Template [Edit](#) [Export](#)
- Application Story Template [Edit](#) [Export](#)

Import Browse...

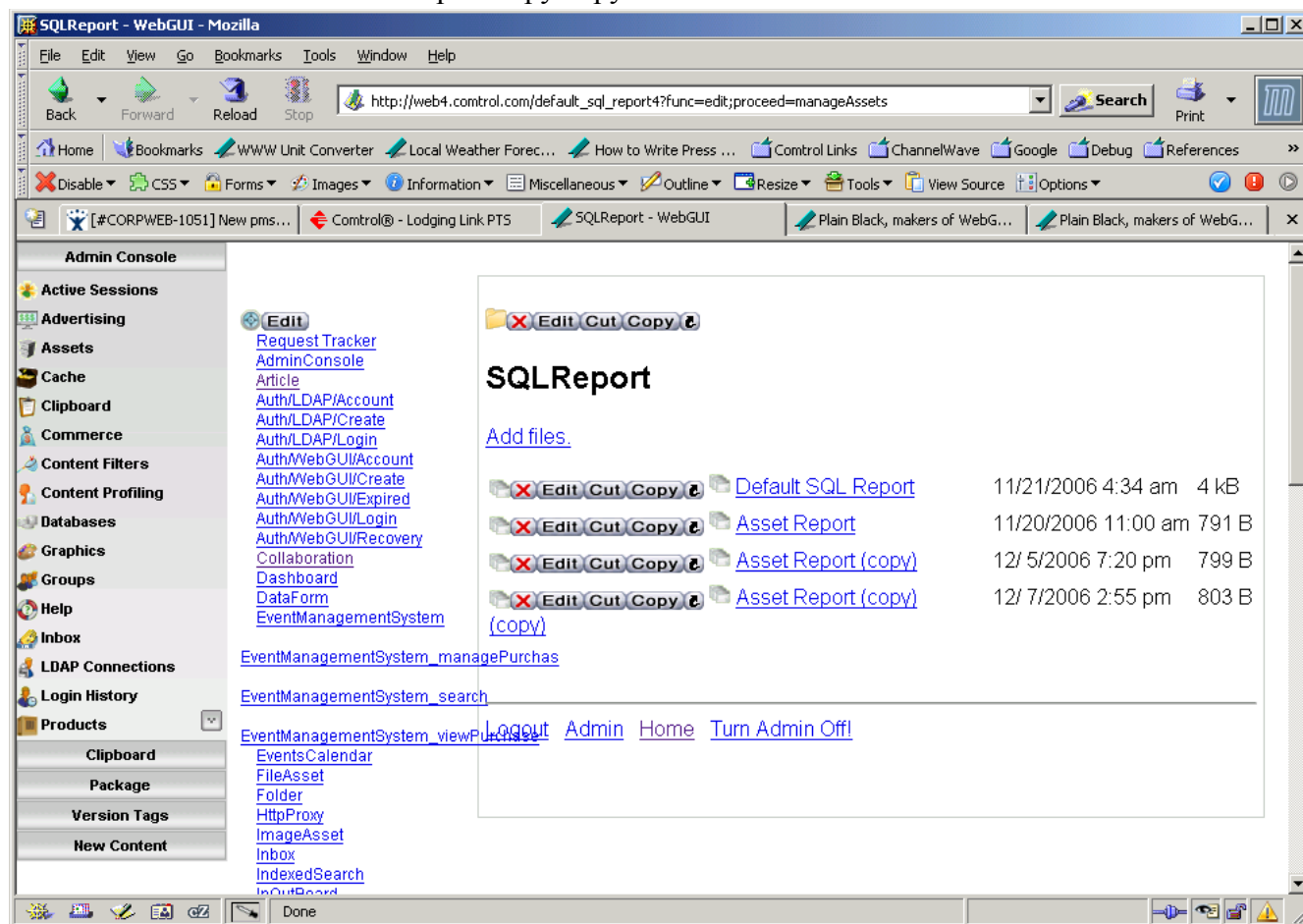
Show admin console.

Commit My Changes
* Admin / 12/ 7/2006
2:55 pm (Autotag)

Back to site.
Turn Admin Off!
Logout

Done

Then I click on edit of the asset report copy copy



Then I click on edit again and again and again and can't ever be able to edit the template. Note that the url changed somehow..

